

HOW TO LOAD THE TARGET PROFILE FOR ELITE DANGEROUS...

First, if not already done, install T.A.R.G.E.T then reboot the computer.

Once done:

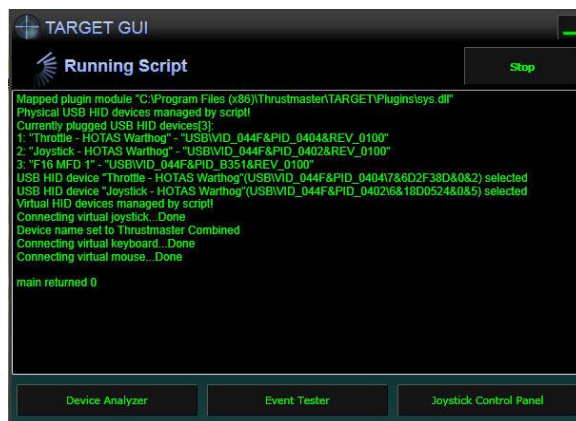
- 1) Launch "TARGET GUI" (use the start menu, or Icon, else, go to : "C:\Program Files (x86)\Thrustmaster\TARGET\x64\TARGETGUI.exe")
- 2) Mouse click on "Run configuration" button in the top right corner of the interface.



- 3) An explorer window will open. Navigate and point the profile file you want to run. For example: "Elite Dangerous Warthog.fc7" and double click it. It will run the profile.

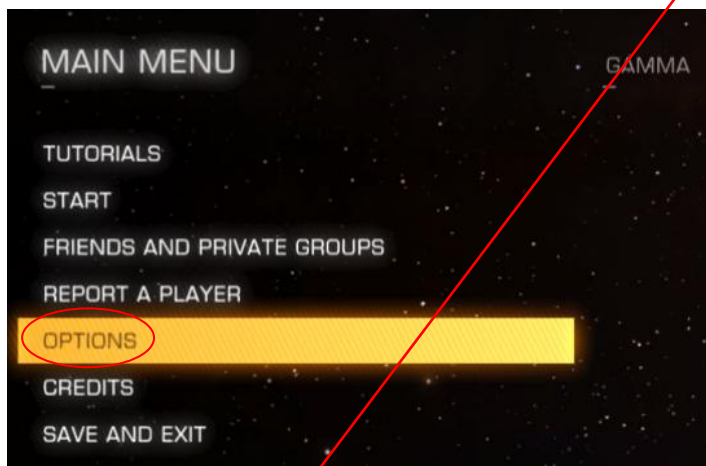
Note: running a profile for the first time on a computer can take some times.

- 4) Once you see this, you can launch "Elite Dangerous" software **but do not stop the profile or exit T.A.R.G.E.T.**

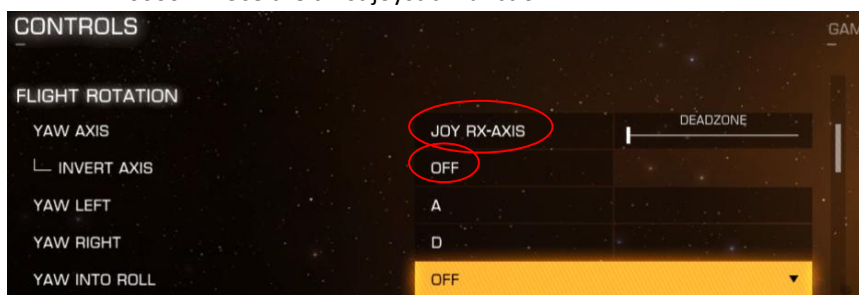


NOTE : Once finished playing and after exiting “Elite Dangerous” you can click on the “stop” button on the top right corner of the “TARGET GUI running script” Window. Then quit T.A.R.G.E.T.

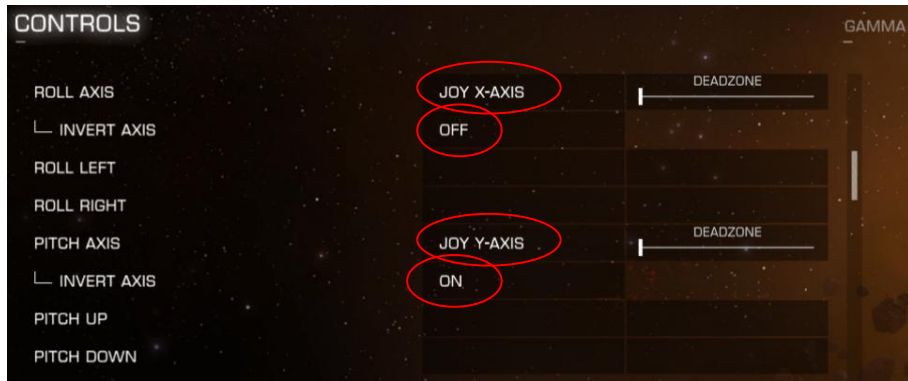
- 5) Launch Elite Dangerous
- 6) In the main screen, in clic on “Menu”, then select “controls”



- 7) Use the “keyboard and mouse” preset active, do not select any other preset.
- 8) Map the yaw axis,
 - HOTAS WARTHOG : using Right throttle minystick (slew control) left and right axis.
 - T-16000M : Use the twist joystick function

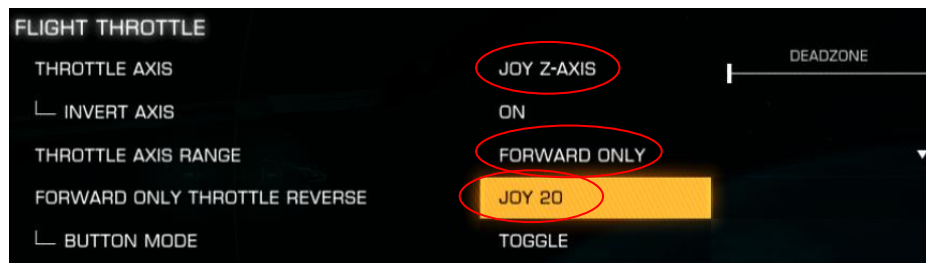


9) Map the Joystick X and Y axis for pitch and roll axes



10) Map the Throttle axis, and the button dedicated to reverse it !

- Warhog : left throttle handle : "left Throttle Button".
- T-16000 M button "B9"



NOW ENJOY THE GAME! AND GOOD LUCK SPACE COWBOY !